

Lily Hill

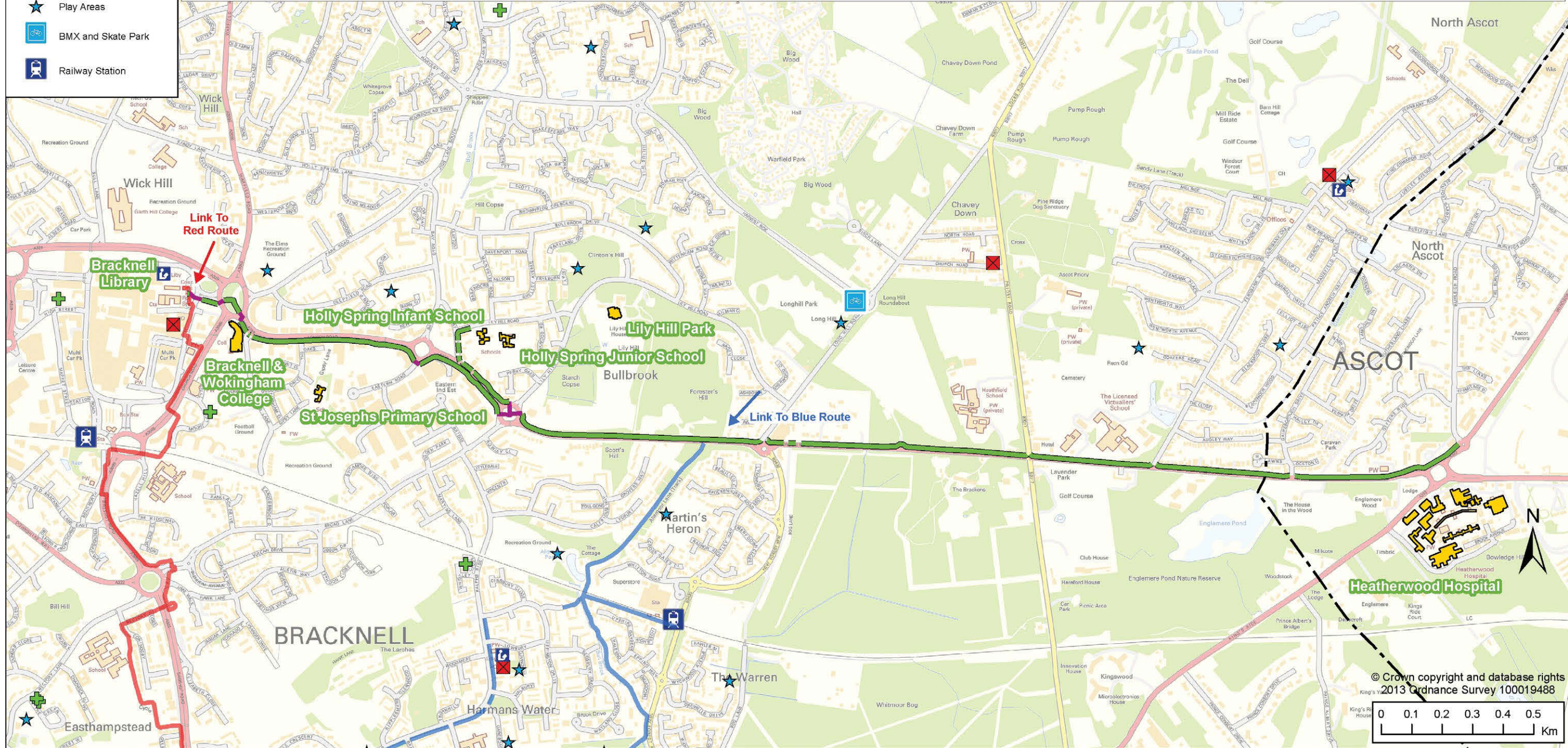
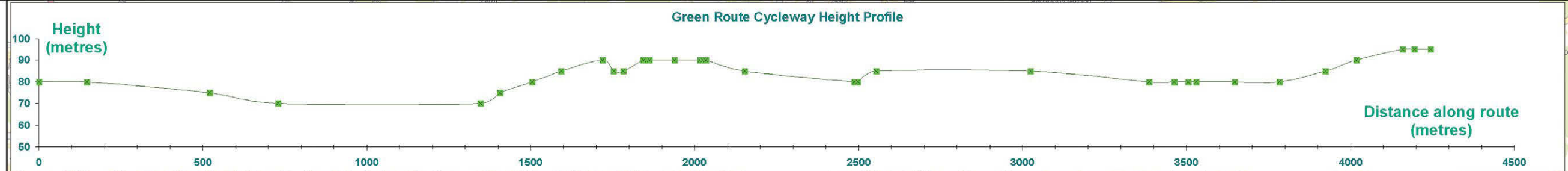


Ascot Racecourse



The Lexicon

- Legend**
- Traffic-free Green Route
 - Green Route Subway
 - Blue Route
 - Red Route
 - + GP Surgery
 - x Post Office
 - ★ Play Areas
 - 🚲 BMX and Skate Park
 - 🚉 Railway Station



© Crown copyright and database rights
2013 Ordnance Survey 100019488



Holly Spring Infant School



Holly Spring Junior School



St Josephs Primary School

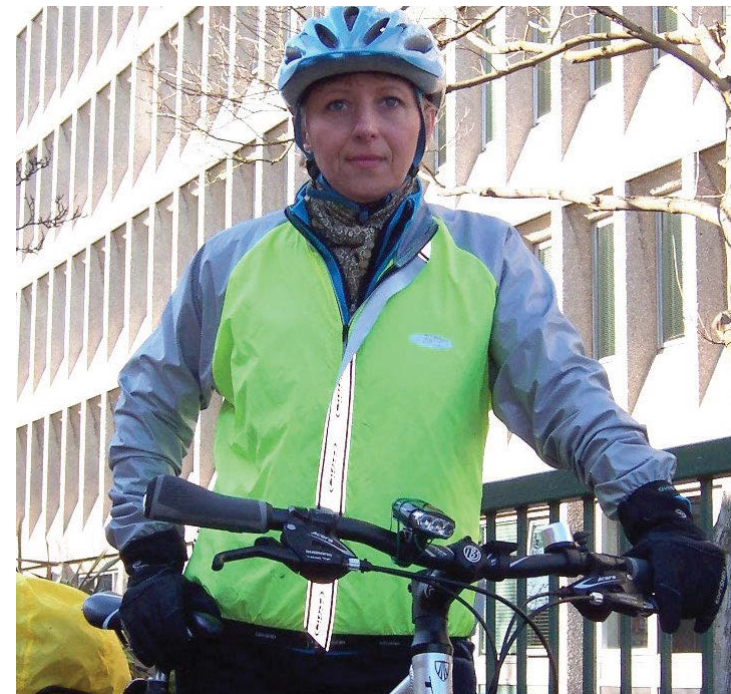


The new Green Route Cycle Corridor

The Green Route runs from Bracknell town centre along the London Road to the border with Ascot. It passes St Joseph's Primary school and a link to the Holly Spring schools, and the picturesque Lily Hill Park. The route is exclusively on traffic-free paths, making it ideal for young cyclists and those returning to the saddle after a break. The Green Route connects to the Blue Route by Lily Hill Park, allowing you to cycle on to Martins Heron rail station, the supermarket and other parks and green spaces.

The Green Route is ideal for:

- **Cycling to education** - the route passes links to St Joseph's Primary and Holly Spring Infant and Nursery and Junior schools, and also leads directly to Bracknell and Wokingham College
- **Cycling to local amenities** - the route leads to Bracknell town centre, but also passes local links to shopping areas in Bullbrook and Martins Heron
- **Cycling to work** - as the route is traffic free, it avoids the congestion on the roads, and passes the Eastern Business Area
- **Cycling to leisure destinations** - the route passes Lily Hill Park
- **Cycling to the BMX/skate park** - the route passes a link to the BMX/skate park at Longhill Park



Cycle parking

There are places to park your cycle along the route. All the popular destinations marked on the route have secure cycle storage.

When parking your bike, please remember these basic guidelines:

- Park your bike where it is clearly visible to passers by, or is overlooked.
- Lock the frame to something solid and immovable.
- Take any removable parts such as lights with you.



Improved signage aids navigation

There is new signage at frequent intervals along the length of the Yellow Route, which makes navigation more easy.



Direction sign - the Green Route has its own dedicated signs, showing either the nearest destinations on the route, or simply indicating the way. You may also see route markings on lamp columns.



Cycle route ahead



No cycling

When cycling on routes shared with pedestrians, always warn others of your presence by use of a bell, slow your speed accordingly, and avoid cycling too closely. Some pedestrians may be visually or hearing impaired so please take extra care.

Cycle journey planner

There are a number of web sites which can help you plan a journey by bicycle. With some sites you can also choose whether you want the quickest, quietest or most scenic route, and then print out a map and directions. These journey planners also enable you to seamlessly plan a route which crosses local authority borough boundaries.



Shared use path - A shared use path is one which can be used by cyclists as well as pedestrians. On such paths, cyclists must give way to pedestrians, and show consideration for other users.



Segregated shared use path - A segregated shared use path is one which has some form of physical separation distinguishing the cyclist and pedestrian areas - usually a delineator white line, a raised white line or a kerb. Cyclists should show consideration for other users.



Cycle route for use by cyclists only



BREAK THE CYCLE AND GET IN THE SADDLE.



Contact us

Help us to maintain the roads, pavements and cycleways by letting us know when something is not right.

Call the council on 01344 352000 and ask to speak to one of the following:

Highways Maintenance - For potholes, cracks in the pavement, street lighting defects etc.

Street Cleansing - For broken glass or other debris on the network.

www.bracknell-forest.gov.uk

Other Colour-coded Routes

The Green Route connects to the Blue Route near Lily Hill Park and the Red Route by Bracknell town centre, and to the borough-wide cycle network at numerous points.



For more information on cycling in Bracknell Forest, visit the cycling page on the council's web site at www.bracknell-forest.gov.uk



Bracknell Forest Council 2018